



Infrastructure Projects & Community Acceptance

GLOBAL INSTITUTE

EDUCATION • TRAINING • CONSULTANCY • EVENTS



www.ipcaglobal.com

INTRODUCTION by Dr. Garry M. Keegan

Welcome to our Global Institute, we specialise in Infrastructure Projects and Local Communities.

In a moment I will outline the benefits of our Professional Diploma Course.

This is an area I have worked in exclusively for the past 25 years. As a practitioner I have supported projects such as high-voltage transmission lines, wind farms, power plants, road and rail projects, and pipelines for oil, gas and water. Academically, my PhD was on infrastructure acceptance and community benefit messaging.

I believe infrastructure is the backbone of the global economy.

However, local or host community acceptance continues to be a key constraint for the development of infrastructure. As you may have experienced, this can often lead to fractured relationships between project promoters and local communities, which may result in project delays and cost over-runs.

The primary objective of this diploma course is to provide you with the knowledge and expertise to successfully engage with local communities. It will equip you with best practice techniques to help you build not only financially successful projects, but also environmentally and socially responsible.

Grid development is facing considerable challenges in the immediate future.

Organised stakeholders can make siting a locally unwanted transmission line an extremely difficult process.

Community acceptance has been a key constraint to the development of onshore wind. Offshore wind projects also experience resistance among coastal and port communities.



Solar power is encountering similar resistance.

Whether a project is single or multi-site, it will in many cases involve the siting of a facility close to a local population. There are examples in every country of environmental public policy and private projects that have proved to be very controversial.

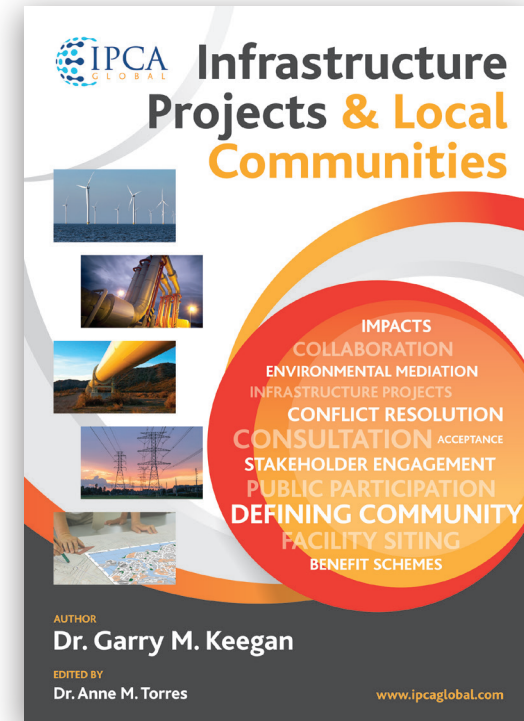
Upon graduating, you will have a good knowledge and appreciation of how to successfully engage with local stakeholders adjacent to projects where you are involved.

This Diploma will add value to your skillset. It will better prepare you for engaging with difficult local stakeholders.

No matter where you work in the world, the same principles apply in engaging with local stakeholders. This Diploma will give you great confidence as you encounter local resistance, and for when you are being considered to deliver an important infrastructure project.

BENEFITS OF TAKING DIPLOMA

- One hour free consultancy (virtual or in-person) on a project you are involved with and/or need assistance with (available anytime from when you register for course to 6 months after graduation)
- Free signed 1st Edition copy of book 'Infrastructure Projects and Local Communities' at graduation with Professional Diploma.
- Signed 1st edition copy of 'Offshore Wind Local Stakeholder Engagement Best Practice Guide'
- Professional Diploma Course 'Pack' – hard copy and pdf's of course material, 'toolkits' & best practice 'templates'
- Add value to your skillset
- Enhance your CV with this specialism, make yourself more noticeable and attractive to potential employers who recognise the importance of good relations with local communities
- Opportunity to win Case Study award (there will be 1st, 2nd & 3rd place in this award)
- Membership of IPCA Global Institute Networking Group
- No matter where you work in the world this course will give you great confidence as you encounter local resistance, and for when you are being considered to deliver an important infrastructure project
- Approved as qualifying as CPD by Engineers Ireland. Members who undertake this course can count it towards their annual CPD requirement - **15 CPD hours**
- In addition to IPCA Global Institute Diploma, delegates also provided with a Certificate of Continuing Professional Development UK . This can be used by delegates towards professional body annual CPD obligations - **15 CPD hours**



WHO IS THIS COURSE DESIGNED FOR?

Those involved in the delivery infrastructure and urban development in proximity to local populations.

Local or host community acceptance continues to be a key constraint for the development of infrastructure. As you may have experienced, this can often lead to fractured relationships between project promoters and local communities. The primary objective of this course is to provide you with the knowledge and expertise to successfully engage with local communities. It will equip you with best practice techniques to help you build not only financially successful projects, but also environmentally and socially responsible.

Those involved in:

- Infrastructure and Urban Development
- Public Policy Developers, Regulators & Planners
- Industry Observers, Experts, Associations and Management Consultants
- Local, State, Municipal and Regional Authorities
- Local and National Government Agencies and Departments
- NGO's (Non-Government Organisation's) involved in infrastructure and urban development



Professional:

- Construction Contract Managers and Project Management
- Public Relations Executives involved in supporting Infrastructure and Urban Development Projects
- Construction and Operation of Energy, Transport, Waste, Communications, Urban Development, Utilities Projects.
- Local and National Government Officials and Public Representatives
- Public and Private Sector Project Management
- Building and Civil Engineers



COURSE DETAILS

Module Design

- Designed to enhance your theoretical knowledge and managerial competencies to plan, carry out and evaluate your own work and work of a team
- Overseen by advisory panel of internationally renowned academics and expert practitioners
- Each module is for one hour, the final 10 minutes comprises questions on module content
- The modules will be designed with voice-over, you can therefore choose slides only or slides with voice-over.
- Each module is made available on a weekly basis.
- You must complete previous modules before commencing subsequent modules
- After completing Module 4, you will be sent a Case Study Assessment to be submitted at the end of the course.
- During the course you will have access to course organiser to submit questions and clarification requests.

Modules

1

- Interaction between Infrastructure Projects and Communities

2

- Facility Siting
- Social and Community Acceptance
- Defining Communities & Local Stakeholders

3

- Procedural Justice
- Public Consultation and Participation

4

- Community Benefit Schemes
- Corporate Social Responsibility
- Governance

5

- Stakeholder Engagement Plan
- Stakeholder Identification & Mapping

6

- Communications Plan
- Community Liaison
- Project Monitoring Committees

7

- Environmental Mediation
- Dispute Resolution

Case Studies

- Energy: Pipelines, Power Stations, Exploration, Wind-farms (on- & offshore), Solar-farms
- Transport: Airports, Rail, Road, Ports, Tunnels
- Communications: Telecoms Masts, Data Centres
- Other: Healthcare (hospitals, treatment centres), Sports Stadia, Urban Development

Course Fees

€795

US\$950

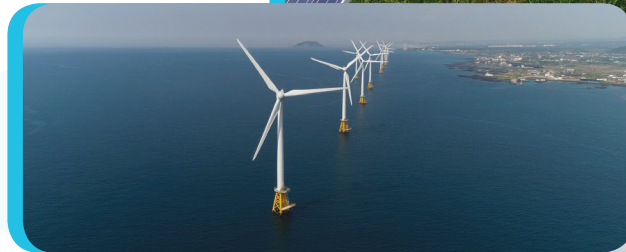
UK£720



CONTACT US

IPCA Global, Bracetown Business
Park, Clonee, D15 YN2P, Dublin,
Republic of Ireland

info@ipcaglobal.com



CPD
MEMBER
The CPD Certification
Service

**ENGINEERS
IRELAND**
REGISTERED TRAINING PROVIDER 2021

www.ipcaglobal.com